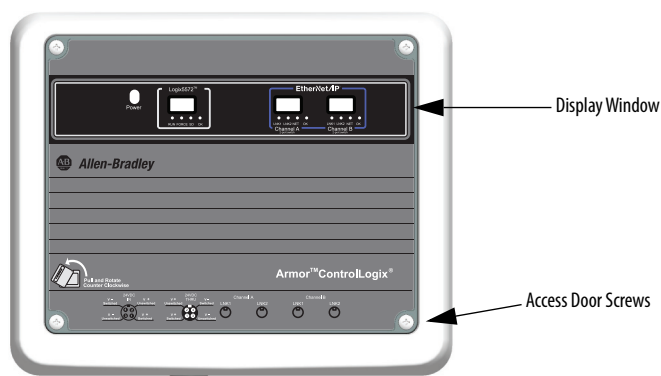


Armor ControlLogix Controllers

Catalog Numbers 1756-L72EROM, 1756-L73EROM

Topic	Page
Summary of Changes	1
Before You Begin	4
Install the Armor ControlLogix Controller	5
Mount the Controller	5
Ground the Controller	6
Open the Access Door	7
Remove and Install the Memory Card	7
Connect to the USB Port	8
Make Network Connections	8
Make Power Connections	9
Set the Network IP Address of the EtherNet/IP Modules	10
Update the Controller	13
Status Indicators	14
Recover the Controller By Using a Memory Card	14
Specifications	15
Additional Resources	16



The Armor™ ControlLogix® controller combines a 1756-L72 or 1756-L73 ControlLogix controller with two EtherNet/IP DLR-capable 1756-EN3TR communication modules in an IP67-rated housing for mounting on a machine.

Summary of Changes

We added the 1756-L73EROM controller to this publication.



ATTENTION: Read this document and the documents listed in the Additional Resources section about installation, configuration and operation of this equipment before you install, configure, operate or maintain this product. Users are required to familiarize themselves with installation and wiring instructions in addition to requirements of all applicable codes, laws, and standards.

Activities including installation, adjustments, putting into service, use, assembly, disassembly, and maintenance are required to be carried out by suitably trained personnel in accordance with applicable code of practice.

If this equipment is used in a manner not specified by the manufacturer, the protection provided by the equipment may be impaired.

注意：在安装、配置、操作和维护本产品前，请阅读本文档以及“其他资源”部分列出的有关设备安装、配置和操作的相应文档。除了所有适用规范、法律和标准的相关要求之外，用户还必须熟悉安装和接线说明。

安装、调整、投运、使用、组装、拆卸和维护等各项操作必须由经过适当训练的专业人员按照适用的操作规范实施。

如果未按照制造商指定的方式使用该设备，则可能会损害设备提供的保护。

ATENCIÓN: Antes de instalar, configurar, poner en funcionamiento o realizar el mantenimiento de este producto, lea este documento y los documentos listados en la sección Recursos adicionales acerca de la instalación, configuración y operación de este equipo. Los usuarios deben familiarizarse con las instrucciones de instalación y cableado y con los requisitos de todos los códigos, leyes y estándares vigentes.

El personal debidamente capacitado debe realizar las actividades relacionadas a la instalación, ajustes, puesta en servicio, uso, ensamblaje, desensamblaje y mantenimiento de conformidad con el código de práctica aplicable.

Si este equipo se usa de una manera no especificada por el fabricante, la protección provista por el equipo puede resultar afectada.

ATENÇÃO: Leia este e os demais documentos sobre instalação, configuração e operação do equipamento que estão na seção Recursos adicionais antes de instalar, configurar, operar ou manter este produto. Os usuários devem se familiarizar com as instruções de instalação e fiação além das especificações para todos os códigos, leis e normas aplicáveis.

É necessário que as atividades, incluindo instalação, ajustes, colocação em serviço, utilização, montagem, desmontagem e manutenção sejam realizadas por pessoal qualificado e especializado, de acordo com o código de prática aplicável.

Caso este equipamento seja utilizado de maneira não estabelecida pelo fabricante, a proteção fornecida pelo equipamento pode ficar prejudicada.

ВНИМАНИЕ: Перед тем как устанавливать, настраивать, эксплуатировать или обслуживать данное оборудование, прочитайте этот документ и документы, перечисленные в разделе «Дополнительные ресурсы». В этих документах изложены сведения об установке, настройке и эксплуатации данного оборудования. Пользователи обязаны ознакомиться с инструкциями по установке и прокладке соединений, а также с требованиями всех применимых норм, законов и стандартов.

Все действия, включая установку, наладку, ввод в эксплуатацию, использование, сборку, разборку и техническое обслуживание, должны выполняться обученным персоналом в соответствии с применимыми нормами и правилами.

Если оборудование используется не предусмотренным производителем образом, защита оборудования может быть нарушена.

注意：本製品を設置、構成、稼働または保守する前に、本書および本機器の設置、設定、操作についての参考資料の該当箇所に記載されている文書に目を通してください。ユーザーは、すべての該当する条例、法律、規格の要件に加えて、設置および配線の手順に習熟している必要があります。

設置調整、運転の開始、使用、組立て、解体、保守を含む諸作業は、該当する実施規則に従って訓練を受けた適切な作業員が実行する必要があります。

本機器が製造メーカーにより指定されていない方法で使用されている場合、機器により提供されている保護が損なわれる恐れがあります。

ACHTUNG: Lesen Sie dieses Dokument und die im Abschnitt „Weitere Informationen“ aufgeführten Dokumente, die Informationen zu Installation, Konfiguration und Bedienung dieses Produkts enthalten, bevor Sie dieses Produkt installieren, konfigurieren, bedienen oder warten. Anwender müssen sich neben den Bestimmungen aller anwendbaren Vorschriften, Gesetze und Normen zusätzlich mit den Installations- und Verdrahtungsanweisungen vertraut machen.

Arbeiten im Rahmen der Installation, Anpassung, Inbetriebnahme, Verwendung, Montage, Demontage oder Instandhaltung dürfen nur durch ausreichend geschulte Mitarbeiter und in Übereinstimmung mit den anwendbaren Ausführungsvorschriften vorgenommen werden.

Wenn das Gerät in einer Weise verwendet wird, die vom Hersteller nicht vorgesehen ist, kann die Schutzfunktion beeinträchtigt sein.

ATTENTION : Lisez ce document et les documents listés dans la section Ressources complémentaires relatifs à l'installation, la configuration et le fonctionnement de cet équipement avant d'installer, configurer, utiliser ou entretenir ce produit. Les utilisateurs doivent se familiariser avec les instructions d'installation et de câblage en plus des exigences relatives aux codes, lois et normes en vigueur.

Les activités relatives à l'installation, le réglage, la mise en service, l'utilisation, l'assemblage, le démontage et l'entretien doivent être réalisées par des personnes formées selon le code de pratique en vigueur. Si cet équipement est utilisé d'une façon qui n'a pas été définie par le fabricant, la protection fournie par l'équipement peut être compromise.

주의：본 제품 설치, 설정, 작동 또는 유지 보수하기 전에 본 문서를 포함하여 설치, 설정 및 작동에 관한 참고 자료 섹션의 문서들을 반드시 읽고 숙지하십시오. 사용자는 모든 관련 규정, 법규 및 표준에서 요구하는 사항에 대해 반드시 설치 및 배선 지침을 숙지해야 합니다.

설치, 조정, 가동, 사용, 조립, 분해, 유지보수 등 모든 작업은 관련 규정에 따라 적절한 교육을 받은 사용자를 통해서만 수행해야 합니다.

본 장비를 제조사가 명시하지 않은 방법으로 사용하면 장비의 보호 기능이 손상될 수 있습니다.

ATTENZIONE Prima di installare, configurare ed utilizzare il prodotto, o effettuare interventi di manutenzione su di esso, leggere il presente documento ed i documenti elencati nella sezione "Altre risorse", riguardanti l'installazione, la configurazione ed il funzionamento dell'apparecchiatura. Gli utenti devono leggere e comprendere le istruzioni di installazione e cablaggio, oltre ai requisiti previsti dalle leggi, codici e standard applicabili.

Le attività come installazione, regolazioni, utilizzo, assemblaggio, disassemblaggio e manutenzione devono essere svolte da personale adeguatamente addestrato, nel rispetto delle procedure previste.

Qualora l'apparecchio venga utilizzato con modalità diverse da quanto previsto dal produttore, la sua funzione di protezione potrebbe venire compromessa.

DIKKAT: Bu ürünün kurulumu, yapılandırılması, işletilmesi veya bakımı öncesinde bu dokümanı ve bu ekipmanın kurulumu, yapılandırılması ve işletimi ile ilgili İlav Kaynaklar bölümünde yer listelenmiş dokümanları okuyun. Kullanıcılar yürürlükteki tüm yönetmelikler, yasalar ve standartların gereksinimlerine ek olarak kurulum ve kablolama talimatlarını da öğrenmek zorundadır.

Kurulum, ayarlama, hizmet alma, kullanma, parçaları birleştirme, parçaları sökme ve bakım gibi aktiviteler sadece uygun eğitimleri almış kişiler tarafından yürürlükteki uygulamaya yönetmeliklerine uygun şekilde yapılabilir.

Bu ekipman üretici tarafından belirlenmiş amaç dışında kullanılırsa, ekipman tarafından sağlanan koruma bozulabilir.

注意事項：在安装、設定、操作或維護本產品前，請先閱讀此文件以及列於「其他資源」章節中有關安裝、設定與操作此設備的文件。使用者必須熟悉安裝和配線指示，並符合所有法規、法律和標準要求。

包括安裝、調整、交付使用、使用、組裝、拆卸和維護等動作都必須交由已經過適當訓練的人員進行，以符合適用的實作法規。

如果將設備用於非製造商指定的用途時，可能會造成設備所提供的保護功能受損。

POZOR: Než začnete instalovat, konfigurovat či provozovat tento výrobek nebo provádět jeho údržbu, přečtěte si tento dokument a dokumenty uvedené v části Dodatečné zdroje ohledně instalace, konfigurace a provozu tohoto zařízení. Uživatelé se musejí vedle požadavků všech relevantních vyhlášek, zákonů a norem nutně seznámit také s pokyny pro instalaci a elektrické zapojení.

Činnosti zahrnující instalaci, nastavení, uvedení do provozu, užívání, montáž, demontáž a údržbu musí vykonávat vhodně proškolený personál v souladu s příslušnými prováděcími předpisy.

Pokud se toto zařízení používá způsobem neodpovídajícím specifikaci výrobce, může být narušena ochrana, kterou toto zařízení poskytuje.

UWAGA: Przed instalacją, konfiguracją, użytkowaniem lub konserwacją tego produktu należy przeczytać niniejszy dokument oraz wszystkie dokumenty wymienione w sekcji Dodatkowe źródła omawiające instalację, konfigurację i procedury użytkowania tego urządzenia. Użytkownicy mają obowiązek zapoznać się z instrukcjami dotyczącymi instalacji oraz oprzewodowania, jak również z obowiązującymi kodeksami, prawem i normami.

Działania obejmujące instalację, regulację, przekazanie do użytkowania, użytkowanie, montaż, demontaż oraz konserwację muszą być wykonywane przez odpowiednio przeszkolony personel zgodnie z obowiązującym kodeksem postępowania.

Jeśli urządzenie jest użytkowane w sposób inny niż określony przez producenta, zabezpieczenie zapewniane przez urządzenie może zostać ograniczone.

OBST! Läs detta dokument samt dokumentet, som står listat i avsnittet Övriga resurser, om installation, konfiguration och drift av denna utrustning innan du installerar, konfigurerar eller börjar använda eller utföra underhållsarbete på produkten. Användare måste bekanta sig med instruktioner för installation och kabeldragning, förutom krav enligt gällande koder, lagar och standarder.

Åtgärder som installation, justering, service, användning, montering, demontering och underhållsarbete måste utföras av personal med lämplig utbildning enligt lämpligt bruk.

Om denna utrustning används på ett sätt som inte anges av tillverkaren kan det hända att utrustningens skyddsanordningar försätts ur funktion.

LET OP: Lees dit document en de documenten die genoemd worden in de paragraaf Aanvullende informatie over de installatie, configuratie en bediening van deze apparatuur voordat u dit product installeert, configureert, bediend of onderhoudt. Gebruikers moeten zich vertrouwd maken met de installatie en de bedradinginstructies, naast de vereisten van alle toepasselijke regels, wetten en normen.

Activiteiten zoals het installeren, afstellen, in gebruik stellen, gebruiken, monteren, demonteren en het uitvoeren van onderhoud mogen uitsluitend worden uitgevoerd door hiervoor opgeleid personeel en in overeenstemming met de geldende praktijkregels.

Indien de apparatuur wordt gebruikt op een wijze die niet is gespecificeerd door de fabrikant, dan bestaat het gevaar dat de beveiliging van de apparatuur niet goed werkt.

Prevent Electrostatic Discharge



ATTENTION: This equipment is sensitive to electrostatic discharge that can cause internal damage and affect normal operation. Follow these guidelines when you handle this equipment.

- Touch a grounded object to discharge potential static.
 - Wear an approved grounding wriststrap.
 - Do not touch connectors or pins on component boards.
 - Do not touch circuit components inside the equipment.
 - Use a static-safe workstation if available.
 - Store the equipment in appropriate static-safe packaging when not in use.
-

Electrical Safety Considerations



ATTENTION: To comply with the CE Low Voltage Directive (LVD), all connections to this equipment must be powered from a source compliant with the following:

- Safety Extra Low Voltage (SELV) Supply
- Protected Extra Low Voltage (PELV) Supply

To comply with UL/C-UL requirements, this equipment must be powered from a source compliant with the following:

- IEC 60950-1 Ed. 2.1, Clause 2.2 - SELV Circuits
-

Environment and Enclosure



ATTENTION: This equipment is intended for use in overvoltage Category II applications (as defined in IEC 60664-1), at altitudes up to 2000 m (6562 ft) without derating.

This equipment is not intended for use in residential environments and may not provide adequate protection to radio communication services in such environments.

This equipment is supplied as enclosed equipment. It should not require additional system enclosure when used in locations consistent with the enclosure type ratings stated in the Specifications section of this publication. Subsequent sections of this publication may contain additional information regarding specific enclosure type ratings, beyond what this product provides, that are required to comply with certain product safety certifications.

In addition to this publication, see the following:

- Industrial Automation Wiring and Grounding Guidelines, publication [1770-4.1](#), for additional installation requirements
 - NEMA 250 and IEC 60529, as applicable, for explanations of the degrees of protection provided by enclosures
-



ATTENTION: In case of malfunction or damage, no attempts at repair should be made. The controller should be returned to the manufacturer for repair. Do not dismantle the controller.

Before You Begin

Before you begin, check to make sure that you have all of the components that you need and plan your network.

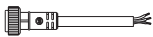
System Components

We ship the controller with these parts installed:

- 1784-SD1 Secure Digital memory card, 1 GB
- 1747-KY key (found in a key holder inside the access door)

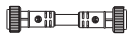
Control power and Ethernet communication cables are available separately.

Cordsets

	No. of Pins	Assembly Rating	Straight Female	Right Angle Female
	4	600V, 10 A	889N-F4AFC ⁽¹⁾ F	889N-R4AFC ⁽¹⁾ F





(1) Replace (1) with 6 (6 ft), 12 (12 ft), or 20 (20 ft) for standard cable lengths.

Patchcords

	No. of Pins	Assembly Rating	Straight Female Straight Male	Straight Female, Right Angle Male	Right Angle Female, Straight Male	Right Angle Female, Right Angle Male
	4	600V, 10 A	889N-F4AFNM ⁽¹⁾	889N-F4AFNE ⁽¹⁾	889N-R4AFNM ⁽¹⁾	889N-R4AFNE ⁽¹⁾

(1) Replace (1) with 1 (1 m), 2 (2 m), 5 (5 m), and 10 (10 m) for standard cable lengths.

Industrial Ethernet Media

Patchcords and Cordsets IP67		
M12 D Code	Connector Type	Cat. No. Unshielded
	Male Straight to Male Straight	1585D-M4TBDM ⁽¹⁾
	Male Straight to Male Right Angle	1585D-M4TBDE ⁽¹⁾
	Male Right Angle to Male Right Angle	1585D-E4TBDE ⁽¹⁾
	Male Straight to Female Straight	1585D-M4TBDF ⁽¹⁾

(1) Available in 0.3, 0.6, 1, 2, 5, 10, 15, and increments of 5 meters up to 75 meters.

TIP See <http://ab.rockwellautomation.com/Connection-Devices/EtherNet-Media> for more information on Industrial Ethernet Media.

Plan Your Network

The two EtherNet/IP communication modules in the enclosure let you use the Armor ControlLogix controller in various EtherNet/IP network topologies, including linear, star, and device level ring (DLR) as a ring node or ring supervisor.

For more information on EtherNet/IP networks, see the publications that are listed in the [Additional Resources on page 16](#).

Install the Armor ControlLogix Controller

The controller ships with the power switch inside the enclosure set to ON and the controller in Remote Program mode. You can make power connections and EtherNet/IP network connections without opening the access door on the enclosure. However, if you need to access the power switch, USB port, memory card, or key, you must open the enclosure access door.

Follow these steps, described in this publication, to install the controller.

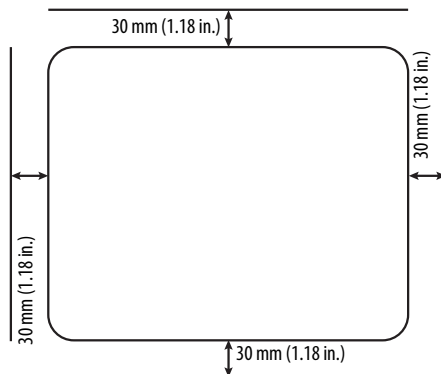
1. [Mount the Controller](#)
2. [Ground the Controller](#)
3. [Open the Access Door](#), optional
4. [Remove and Install the Memory Card](#), optional
5. [Connect to the USB Port](#), optional
6. [Make Network Connections](#)
7. [Make Power Connections](#)
8. [Set the Network IP Address of the EtherNet/IP Modules](#)
9. [Update the Controller](#)



ATTENTION: Make sure that all connectors and caps are securely tightened to seal connections properly against leaks and maintain IP67 requirements.

Mount the Controller

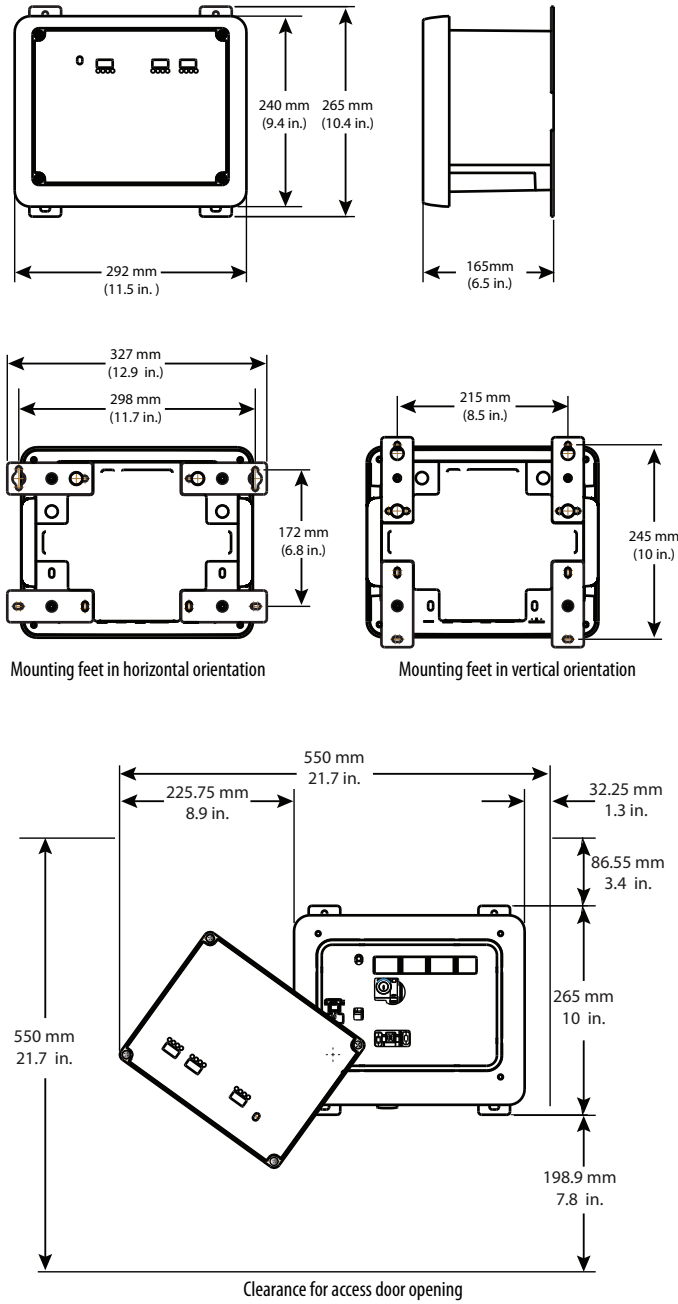
Observe these minimum spacing requirements around the enclosure.



Mounting feet can be attached in either horizontal or vertical orientation as shown in [Product Dimensions on page 6](#). Attach the mounting feet to the enclosure by using the four flat-head screws that are supplied with the mounting feet. Torque screws to 8.5 N•m (75.2 lb•in).

Mount the module directly to a machine by using four mounting holes. The mounting hole diameter is 6.8 mm (0.27 in.) on the mounting feet that are included with the enclosure. Use four M6 screws and torque screws to 6.6 N•m (58 lb•in). See the [Product Dimensions on page 6](#).

Product Dimensions



Ground the Controller

You must provide a proper grounding path by using the ground screw on the bottom of the enclosure. To attach grounding wires, remove the screw and attach a ring lug, or loosen the screw and slide a fork connector underneath. Tighten the screw.

PE Ground	Wire Size	Torque
	1.3...5.2 mm ² (#16...#10 AWG)	2 N·m (17.7 lb·in)

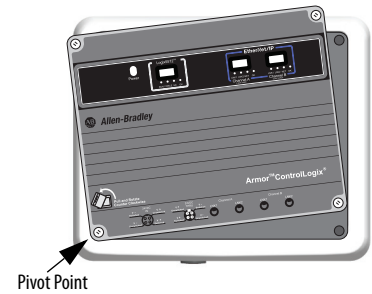
See Industrial Automation Wiring and Grounding Guidelines, publication [1770-4.1](#) for guidelines on how to install an industrial control system.

Open the Access Door

Open the enclosure door to access the power switch, controller USB port, memory card, and key.

1. Loosen the four (captive) screws on the front of the enclosure.
2. Gently lift the door and rotate it counter-clockwise from the pivot at the lower left corner.
The door remains attached to the enclosure.
3. Close the access door on the enclosure and torque the four screws to 3.8 N•m (33.5 lb•in).

IMPORTANT When the access door is open, the Armor ControlLogix controller rating is Type 1.

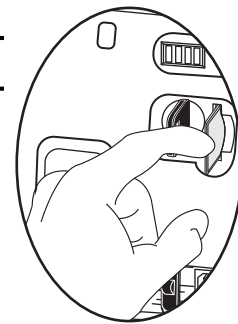


Remove and Install the Memory Card

If you want to remove the memory card, follow these steps.

IMPORTANT Verify that the memory-card status indicator is off and that the card is not in use before removing it.

1. Open the enclosure door to access the controller.
2. Turn the keyswitch to the PROG position.
3. Press and release the memory card to eject it.
4. Remove the memory card.
5. Turn the keyswitch to the REM position.
6. Close the enclosure access door.

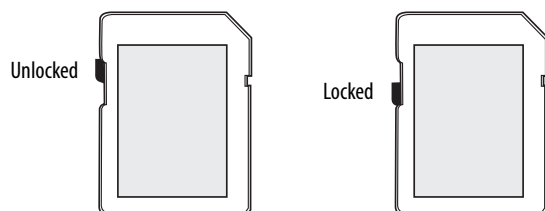


Follow these steps to install the memory card.

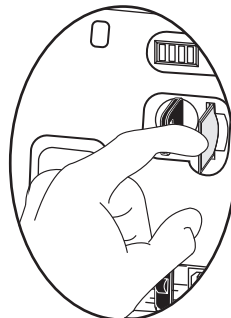


ATTENTION: If you are **not** sure of the contents of the memory card, **before** you install the card, turn the keyswitch of the controller to the PROG position. Depending on the contents of the card, a power cycle or fault could cause the card to load a different project or operating system into the controller.

1. Open the access door on the enclosure.
2. Verify that the memory card is locked or unlocked according to your preference.



3. Insert the memory card into the memory card slot.
4. Gently press the card until it clicks into place.
5. Close the enclosure access door.



Connect to the USB Port

The controller has a USB port that uses a Type B receptacle. The port is USB 2.0-compatible and runs at 12 Mbps. To use the USB port of the controller, you must have RSLinx® Classic software, version 2.59.02 or later, installed on your workstation.


Access the USB port by opening the enclosure door.

Use a USB cable to connect your workstation to the USB port. With this connection, you can update firmware and download programs to the controller directly from your workstation.

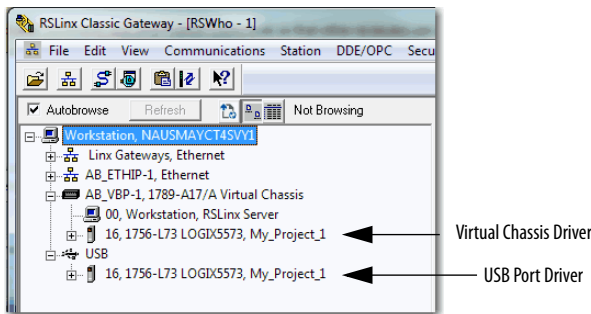


ATTENTION: The USB port is intended for only temporary local programming purposes and not intended for permanent connection. The USB cable must not exceed 3.0 m (9.84 ft) and must not contain hubs.

To configure RSLinx Classic software to use a USB port, you must configure a USB driver. To configure a USB driver, follow these steps. If you are using Windows 7 operating system, the driver is automatically installed and you can go ahead to step 5.

1. Connect your controller and workstation by using a USB cable.
2. On the Found New Hardware Wizard dialog box, click one of the Windows Update connection options and click Next.
 - TIP** If the software for the USB driver is not found and the installation is canceled, verify that you have installed RSLinx Classic software, version 2.59.02 or later.
3. Click Install the software automatically (Recommended) and click Next.
4. Click Finish.
5. To browse to your controller in RSLinx Classic software, click RSWho .

In the RSLinx Workstation organizer, your controller appears under two drivers, a virtual chassis and the USB port. You can use either driver to browse to your controller.

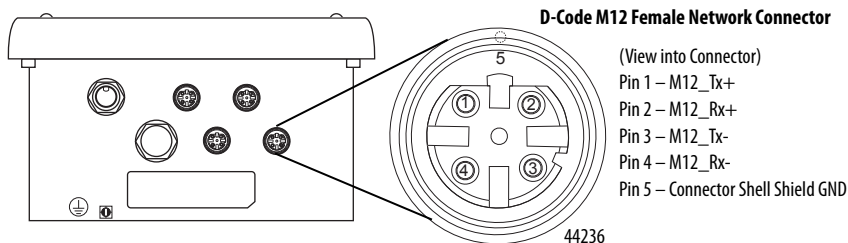


Make Network Connections

1. Remove the dust caps from the four Ethernet connectors on the bottom of the enclosure.

IMPORTANT If you disconnect network connections from these ports, reattach the dust caps and finger-tighten.

2. Connect the cordsets that you selected to the Ethernet communication ports on the bottom of the enclosure and torque to 1 N•m (9 lb•in).



IMPORTANT Use the 1585D–M4DC–H: Polyamide small body unshielded or the 1585D–M4DC–SH: Zinc die-cast large body shielded mating connectors for the D-Code M12 female network connector.

IMPORTANT Use two twisted-pair CAT5E UTP or STP cables.

D-Code M12 Pin	Wire Color	Signal	8-way Modular RJ45 Pin
1	White-Orange	TX+	1
2	White-Green	RX+	3
3	Orange	TX-	2
4	Green	RX-	6



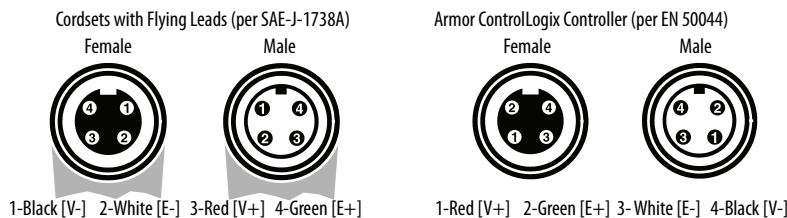
ATTENTION: When you use a shielded Ethernet cable, this product terminates the shield-to-chassis ground through the Ethernet connector bulkheads. If another component that ties its Ethernet connector bulkhead to ground is connected to this product with a shielded Ethernet cable, a ground loop is created. When you use shielded Ethernet cable, follow the guidelines for use of shielded cable, most importantly the guidelines for eliminating ground loops. For information on eliminating ground loops, see the 'ODVA EtherNet/IP Media Planning and Installation Manual', available on the [ODVA website](#). For more information on how to select cables for EtherNet/IP Networks, see the Guidance for Selecting Cables for EtherNet/IP Networks White Paper, publication [ENET-WP007](#).

Make Power Connections

Male Connector (Power Input)	Female Connector (Power Output)	Pin	Signal
		1	V+ Switched
		2	V+ Unswitched
		3	V- Unswitched Common
		4	V- Switched Common

The bottom of the enclosure has two sealed mini-style power connectors that operate in parallel with one another to allow daisy-chaining of device power with other devices. The unit receives its required power through the male connector. The female connector lets power be daisy-chained to another ArmorStart®, Armor ControlLogix, Armor GuardLogix® or On-Machine™ I/O products.

IMPORTANT On Machine end devices, such as the Armor ControlLogix controller, use the EN-50044 wiring standard while On-Machine cordsets with flying leads use the SAE-J-1738A standard for wiring. Use care to follow the pin numbering convention that is shown below before powering up the unit.



1. Remove the dust cap from the female power connector on the bottom of the enclosure.

IMPORTANT If you disconnect power connections from these ports, reattach the dust cap and finger-tighten.

2. Make power connections and tighten to hand tight plus one half-turn.

Set the Network IP Address of the EtherNet/IP Modules

The EtherNet/IP communication modules reside in slots 2 and 3 of the ControlLogix chassis within the enclosure. The modules are shipped with Bootstrap Protocol (BOOTP)/Dynamic Host Configuration Protocol (DHCP) enabled and their rotary switches set to 999. You can use the following methods to set the IP address of each module.

- BOOTP/DHCP server
- RSLinx Classic software
- Studio 5000 Logix Designer® application



ATTENTION: The EtherNet/IP communication module must be assigned a fixed network address. The IP address of this module must not be dynamically provided. Failure to observe this precaution can result in unintended machine motion or loss of process control.

See the EtherNet/IP publications that are listed in [Additional Resources on page 16](#) for detailed information on setting an IP address.

Set the Network IP Address with the BOOTP/DHCP Server

The BOOTP/DHCP server is a standalone server that you can use to set an IP address. When used, the BOOTP/DHCP server sets an IP address and other Transport Control Protocol (TCP) parameters.

Access the BOOTP/DHCP server from one of these locations:

- Programs > Rockwell Software > BOOTP-DHCP Server
If you have not installed the server, you can download and install it from <http://www.ab.com/networks/ethernet/bootp.html>.
- Tools directory on the Studio 5000® environment installation CD

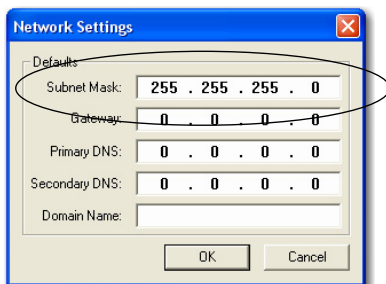
IMPORTANT Before you start the BOOTP/DHCP server, make sure that you have the hardware (MAC) address of the module. The hardware address is on the label on the bottom of the enclosure.

Follow these steps to set the IP address of the module by using a BOOTP/DHCP server.

1. Start the BOOTP/DHCP software.
2. From the Tools menu, choose Network Settings.



3. Type the Subnet Mask of the network.

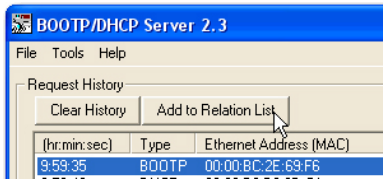


The Gateway address, Primary and/or Secondary DNS address, and Domain Name fields are optional.

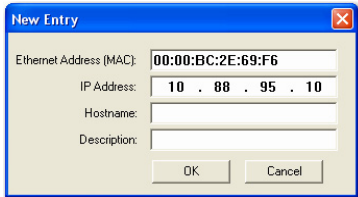
4. Click OK.

The Request History panel shows the hardware addresses of all modules issuing BOOTP requests.

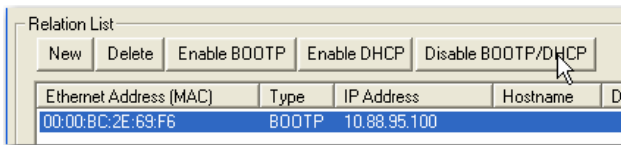
- Select the appropriate module and click Add to Relation List.



- On the New Entry dialog box, type an IP Address, Hostname, and Description for the module.



- Click OK.
- To assign this configuration to the module permanently, wait for the module to appear in the Relation List panel and select it.
- Click Disable BOOTP/DHCP.



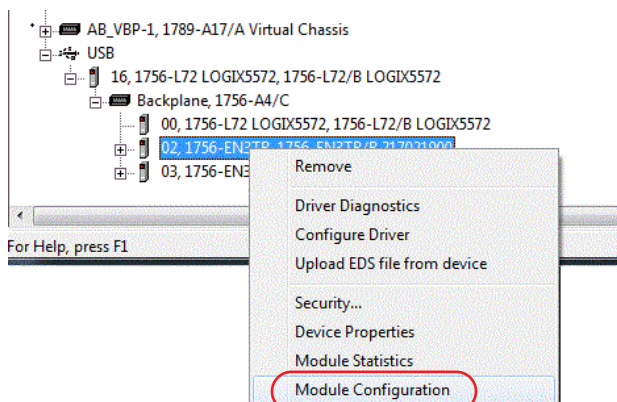
IMPORTANT If you do not click Disable BOOTP/DHCP, the host controller clears the current IP configuration and begins sending BOOTP requests again each time that power is cycled.

Set the Network IP Address with RSLinx Classic Software

A BOOTP/DHCP server is not available.

Follow these steps to use RSLinx Classic software to set the IP address of the communication module.

- Connect the USB cable to the controller.
- Confirm that the controller uses the correct firmware revision.
If not, upgrade the controller firmware as described on [page 13](#).
- Launch RSLinx Classic software.
- Browse the network.
- Navigate through the controller and across the backplane to the EtherNet/IP communication module via the USB driver.
- Right-click the EtherNet/IP communication module and choose Module Configuration.

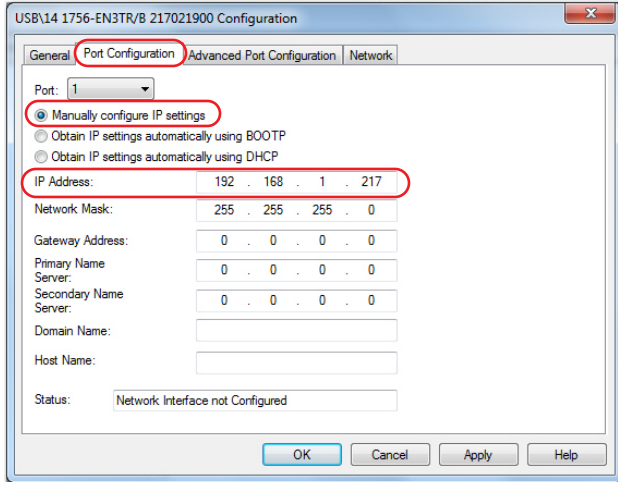


- On the Module Configuration dialog box, click the Port Configuration tab.

- Click Manually configure IP settings.

IMPORTANT If you click either automatic option, on a power cycle, the controller clears the current IP configuration and resumes sending BOOTP requests.

- Type the IP address in the IP Address field.

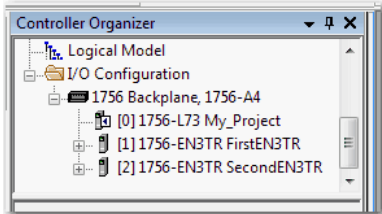


- Click OK.

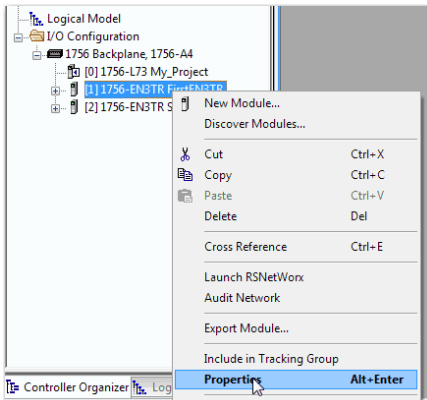
Set the Network IP Address with the Studio 5000 Logix Designer Application

To use the Logix Designer application to set the IP address, the system that includes the EtherNet/IP communication module must be online. Follow these steps to use the Logix Designer application to set the IP address of the module.

- Launch the Studio 5000 Logix Designer application.
- Create a controller project that includes all of the components in the enclosure.



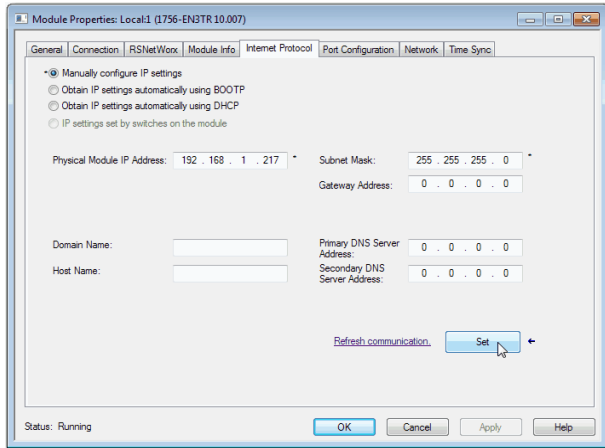
- Download the project.
- Go online with the controller.
- In the Controller Organizer, right-click the EtherNet/IP module and choose Properties.



- On the Module Properties dialog box, click the Internet Protocol tab.

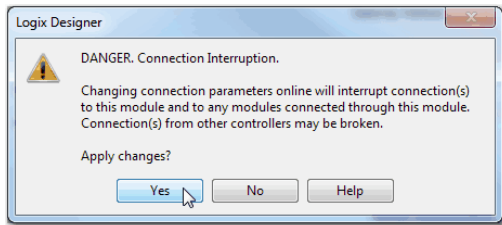
7. In the Physical Module IP Address field, type the IP address.
8. In the other fields, type the other network parameters, if needed.

IMPORTANT The fields that appear vary from one EtherNet/IP module to another.



9. Click Set.

You see a warning that prompts you to confirm that you want to change the IP address.



10. Click Yes.
11. Click OK.

Update the Controller

The controller ships without firmware. Controller firmware is packaged with the Studio 5000 environment. In addition, controller firmware is also available for download from the Rockwell Automation® Technical Support website at: <http://www.rockwellautomation.com/support/>.

You can update your firmware by using either ControlFLASH™ software or by using the AutoFlash feature of the Logix Designer application.

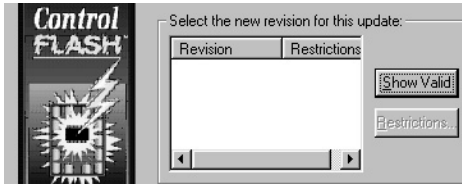
Use ControlFLASH Software to Update Firmware

The safety partner updates automatically when the primary controller is updated.

IMPORTANT If the memory card is locked and the Load Image option of the stored project is set to On power up, the controller firmware is not updated as a result of these steps. Any previously stored firmware and projects are loaded instead.

1. Verify that the appropriate network connection is made and the network driver has been configured in RSLinx Classic software.
2. Start ControlFLASH software.
3. Click Next.
4. Select the catalog number of the controller and click Next.
5. Expand the network until you see the controller.
6. Select the controller and click Next.

7. Select the revision level to which you want to update the controller and click Next.



8. To start the update of the controller, click Finish and then click Yes.
After the controller is updated, the status dialog box displays 'Update complete'.

IMPORTANT Allow the firmware update to complete fully before you cycle power or otherwise interrupt the update. If the ControlFLASH update of the controller is interrupted, the controller reverts to boot firmware, which is firmware revision 1.xxx, and you will need to repeat the update process.

9. Click OK.
10. Close ControlFLASH software.

Use AutoFlash to Update Firmware

To update your controller firmware with the AutoFlash feature, follow these steps.

1. Verify that the appropriate network connection is made and your network driver is configured in RSLinx Classic software.
2. Use the Logix Designer application to create a controller project at the version you need.
3. Click RSWho to specify the controller path.



4. Select your controller and click Update Firmware.
5. Select the firmware revision that you want.
6. Click Update.
7. Click Yes.

Allow the firmware update to complete without interruption. When the firmware update is complete, the Who Active dialog box opens. You can complete other tasks in the Logix Designer application.

Status Indicators

Status indicators are visible through the window on the front of the enclosure. For status indicator descriptions, see the ControlLogix System User Manual, publication [1756-UM001](#).

Recover the Controller By Using a Memory Card

If you need to recover the controller, due to a corrupt program or other issue, you can do so by creating a recovery memory card. This procedure requires the use of a second, user-supplied 1784-SD1 or 1784-SD2 memory card. Perform this procedure on a separate controller that is not locked and is not corrupt, or perform the procedure before downloading any project to your Armor ControlLogix controller.

IMPORTANT To avoid inadvertently overwriting your application program, you must not use the 1784-SD1 memory card that was shipped already installed in the Armor ControlLogix controller.

Follow these steps to create the recovery memory card.

1. Update the Armor ControlLogix controller to the desired firmware revision by following the instructions in [Update the Controller on page 13](#).
2. Remove the memory card that came with the controller by following the instructions in [Remove and Install the Memory Card on page 7](#).

3. Insert a new 1784-SD1 or 1784-SD2 memory card.

TIP Label this memory card 'recovery', so that you do not confuse it with the memory card that was shipped with the controller.
4. Load a blank project into the controller, and make sure to check the box to store the project to the memory card and load on powerup.
5. Remove the 'recovery' memory card and store it in a secure location.
6. Reinsert the memory card that came with the Armor ControlLogix controller by following the instructions in [Remove and Install the Memory Card on page 7](#).

Follow these steps to use the recovery memory card to recover the controller.

1. Remove the memory card that came with the controller.
2. Insert the recovery memory card.
3. Cycle power to the controller.

The blank project on the recovery memory card overwrites the project in the controller.

Specifications

This section lists general specifications specific to the enclosure. Specifications for the components in the Armor ControlLogix controller enclosure are in their respective Technical Data publications, which are listed in the [Additional Resources on page 16](#).

Attribute	1756-L72EROM, 1756-L73EROM
Input system power - unswitched (pins 2 and 3)	18...32V DC @ 8 A
Input pass through power - switched (pins 1 and 4)	18...32V DC @ 8 A, SELV
Output external power - unswitched (pins 2 and 3)	18...32V DC @ 6 A
Output pass through power - switched (pins 1 and 4) ⁽¹⁾	18...32V DC @ 8 A, SELV
Enclosure type rating	UL Type 4/4x Meets IP67 (when marked) with receptacle dust caps or cable termination
Isolation voltage	30V (continuous), Basic Insulation Type, Power to enclosure, Ethernet channels to Power, and non-redundant Ethernet channels to non-redundant Ethernet channels. No isolation between redundant Ethernet channels Type tested at 707V DC for 60 s
Temperature, operating	0...60 °C (32...140 °F)
Weight, approx (without mounting feet)	7.04 kg (15.50 lb)
Dimensions (HxWxD), approx	240 x 292 x 164.52 mm (9.4 x 11.5 x 6.5 in.)

(1) Output pass-through power is intended to power other compatible On-Machine devices only.



ATTENTION: This equipment is certified for use only within the ambient air temperature range of 0...60 °C (32...140 °F). The equipment must not be used outside of this range.

Additional Resources

These resources contain information about related products from Rockwell Automation.

Resource	Description	
Controller	ControlLogix System User Manual, publication 1756-UM001	Provides information on how to install, configure, program, and use ControlLogix controllers.
	Product Certifications website, http://www.ab.com	Provides declarations of conformity, certificates, and other certification details.
EtherNet/IP Networks	EtherNet Design Considerations Reference Manual, publication ENET-RM002	Provides details about how to use EtherNet/IP communication modules with Logix5000™ controllers and communicate with other devices on the EtherNet/IP network.
	EtherNet/IP Network Configuration User Manual, publication ENET-UM001	Describes how you can use EtherNet/IP communication modules with your Logix5000 controller and communicate with various devices on the Ethernet network.
	EtherNet/IP Embedded Switch Technology Application Guide, publication ENET-AP005	Provides details about how to install, configure, and maintain linear and Device Level Ring (DLR) networks by using Rockwell Automation EtherNet/IP devices that are equipped with embedded switch technology.
	EtherNet/IP Media Planning and Installation Manual This manual is available from the Open DeviceNet Vendor Association (ODVA) at: http://www.odva.org .	Provides details about how to use the required media components and how to plan for, install, verify, troubleshoot, and certify your EtherNet/IP network.
Specifications for Armor ControlLogix Components	1756 ControlLogix Controller Technical Data, publication 1756-TD001	Provides product specifications, dimensions, environmental data, and information on certifications for the Armor ControlLogix controller.
	1756 ControlLogix Communication Modules Specifications Technical Data, publication 1756-TD003	Provides product specifications, dimensions, environmental data, and information on certifications for the 1756-EN3TR modules.
	1756 ControlLogix Power Supplies Specifications Technical Data, publication 1756-TD005	Provides product specifications, dimensions, environmental data, and information on certifications for the 1756-PB72 power supply.
	1756 ControlLogix Chassis Specifications Technical Data, publication 1756-TD006	Provides product specifications, dimensions, environmental data, and information on certifications for the chassis.
	Industrial Automation Wiring and Grounding Guidelines, publication 1770-4.1	Provides general guidelines for installing a Rockwell Automation industrial system.

You can view or download publications at <http://www.rockwellautomation.com/literature/>. To order paper copies of technical documentation, contact your local Allen-Bradley distributor or Rockwell Automation sales representative.

Rockwell Automation Support

For technical support, visit <http://www.rockwellautomation.com/support/overview.page>.

Rockwell Automation maintains current product environmental information on its website at <http://www.rockwellautomation.com/rockwellautomation/about-us/sustainability-ethics/product-environmental-compliance.page>.

Allen-Bradley, Armor, ArmorStart, ControlLogix, GuardLogix, Logix5000, On-Machine, Rockwell Automation, Rockwell Software, RSLinx, Studio 5000, and Studio 5000 Logix Designer are trademarks of Rockwell Automation, Inc. Trademarks not belonging to Rockwell Automation are property of their respective companies.

Rockwell Otomasyon Ticaret A.Ş., Kar Plaza İş Merkezi E Blok Kat:6 34752 İçerenköy, İstanbul, Tel: +90 (216) 5698400

www.rockwellautomation.com

Power, Control and Information Solutions Headquarters

Americas: Rockwell Automation, 1201 South Second Street, Milwaukee, WI 53204-2496 USA, Tel: (1) 414.382.2000, Fax: (1) 414.382.4444
Europe/Middle East/Africa: Rockwell Automation NV, Pegasus Park, De Kleetlaan 12a, 1831 Diegem, Belgium, Tel: (32) 2 663 0600, Fax: (32) 2 663 0640
Asia Pacific: Rockwell Automation, Level 14, Core F, Cyberport 3, 100 Cyberport Road, Hong Kong, Tel: (852) 2887 4788, Fax: (852) 2508 1846

Publication 1756-IN061B-EN-P - February 2017

Supersedes Publication 1756-IN061A-EN-P - June 2015

PN-408721

Copyright © 2017 Rockwell Automation, Inc. All rights reserved. Printed in the U.S.A.