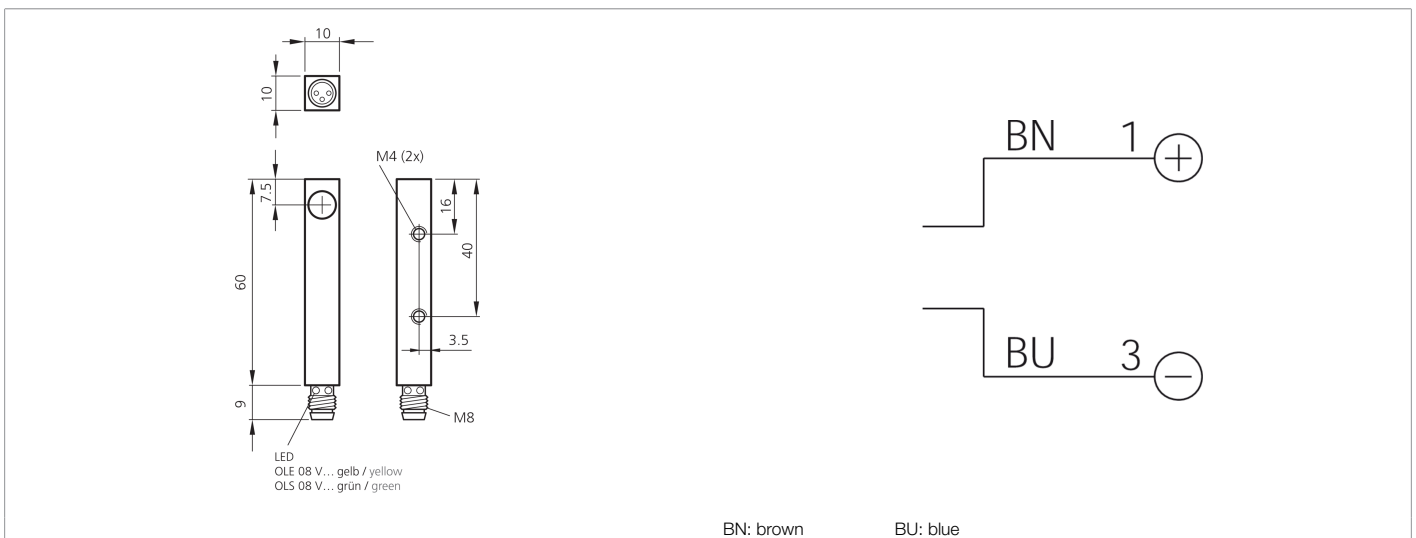
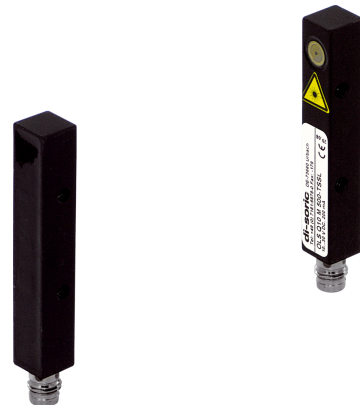




202934
OLS Q10 M 500-TSSL
Laser through-beam sensor, transmitter

- Collimated red-light laser
- Visible laser spot
- Compact design
- Robust metal housing



Function											

Technical data (typ.)	+20°C, 24 V DC
Service voltage	10 ... 35 V DC
No-load current (max.)	30 mA
Insulation voltage endurance	500 V
Housing dimensions	10 x 10 x 60 mm
Housing length	10 mm
Housing height	10 mm
Housing width	60 mm
Housing material	Die-cast zinc (Black, painted)
Material	Glass (Window)
Protection class	III, operation on protective low voltage
Operating principle	Through-beam sensor
Evaluation	digital
Design	Cuboid design
Consisting of	Transmitter
Voltage drop (max.)	2.5 V
Light source	Laser
Laser class	1 (IEC 60825-1)
Color	red
Wavelength	670 nm
Modulation	Clocked



202934

OLS Q10 M 500-TSSL

Laser through-beam sensor, transmitter

Technical data (typ.)

+20°C, 24 V DC

Laser beam divergence

2 mrad

Laser direction error

< 10 mrad

Range

0 ... 500 mm

Sensitivity adjustment

no setting elements

Switching frequency

2000 Hz

Ambient temperature during operation

0 ... +50 °C

Protection type

IP 67

Connection

Connector, M8, 3-pin

Connection cable

TK ...

More information / accessories

<https://www.di-soric.com/202934>